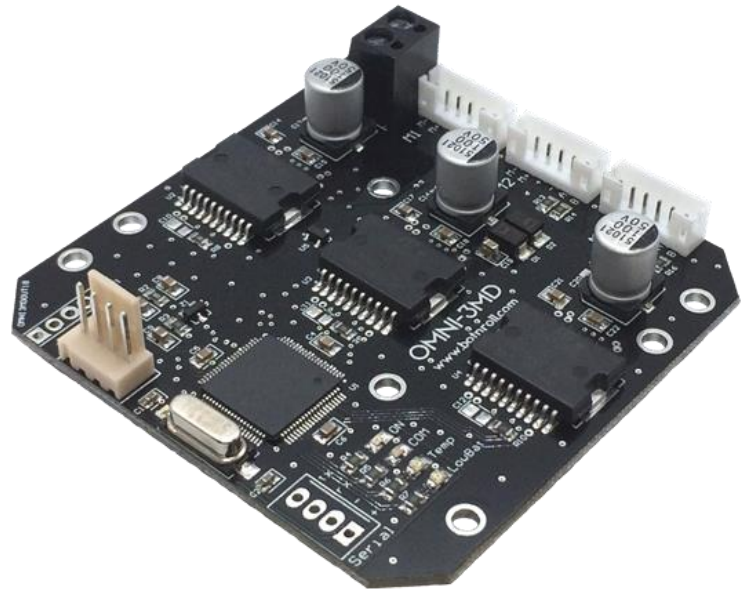


# OMNI-3MD

## Three Motors Controller Board

*Arduino Library Available!*



### Specifications:

- I2C communication
- 3 DC motors closed loop PID control
- Motors voltage: 8VDC to 50VDC
- Control circuitry voltage: 5VDC (thru I2C BUS)
- Maximum current per motor: 14.2A Tpeak<1ms
- RMS current per motor 5.2A
- Temperature monitoring and thermal shutdown
- Battery voltage monitoring
- User access to encoders counting for odometry
- Arduino UNO and MEGA and Raspberry Pi compatible
- 16bits 40MHz processor
- Dimensions: 70mm x 70mm

**OMNI-3MD** is an I2C SLAVE device able to control 3 DC motors with closed loop PID control.

Allows several different moving motor modes:

- Omnidirectional movement using 3 motors (concentric, with the same distance to the centre and offset 120°) with PID control.
- Differential movement using 2 motors with PID control, using International System of Units (SI).
- Linear movement of 1, 2 or 3 motors with/without PID control.
- Positional movement of 1, 2 or 3 motors with PID control.

The available **Arduino Library** allows a very simple and easy interaction with **OMNI-3MD**.

More information at the product support page: [http://www.botnroll.com/omni3md\\_en/](http://www.botnroll.com/omni3md_en/)